

Slab Type Apartments

Only 2 apartments per floor with north & south oriented balconies, ensures ample sunlight and proper ventilation in all the corners of the house. This also provides enhanced privacy and exclusivity giving your house a new definition of luxury.

Beautiful Views

The living rooms are as wide as 7.5 meters with attached balconies to enhance the joy of green views. Enjoy unlimited greens from all the corners of the house, including all your bedrooms, living/dining rooms and kitchens.

Extravagant Balconies

Enjoy these spacious balconies with all bedrooms, kitchen and not to miss even with the toilets. So plant your own kitchen garden or just sit and relax, just soak yourself in these green horizons anytime anywhere.

High Ceilings

To enhance the sense of space and openness, the floor height is 3.6 meters. The higher the ceiling, the better the ventilation of air.

Master Bedroom Dressing Area

6.01 sqm of classy his & her master closet area is lined with open shelving & display cabinets.

Private Elevators

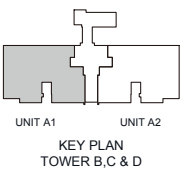
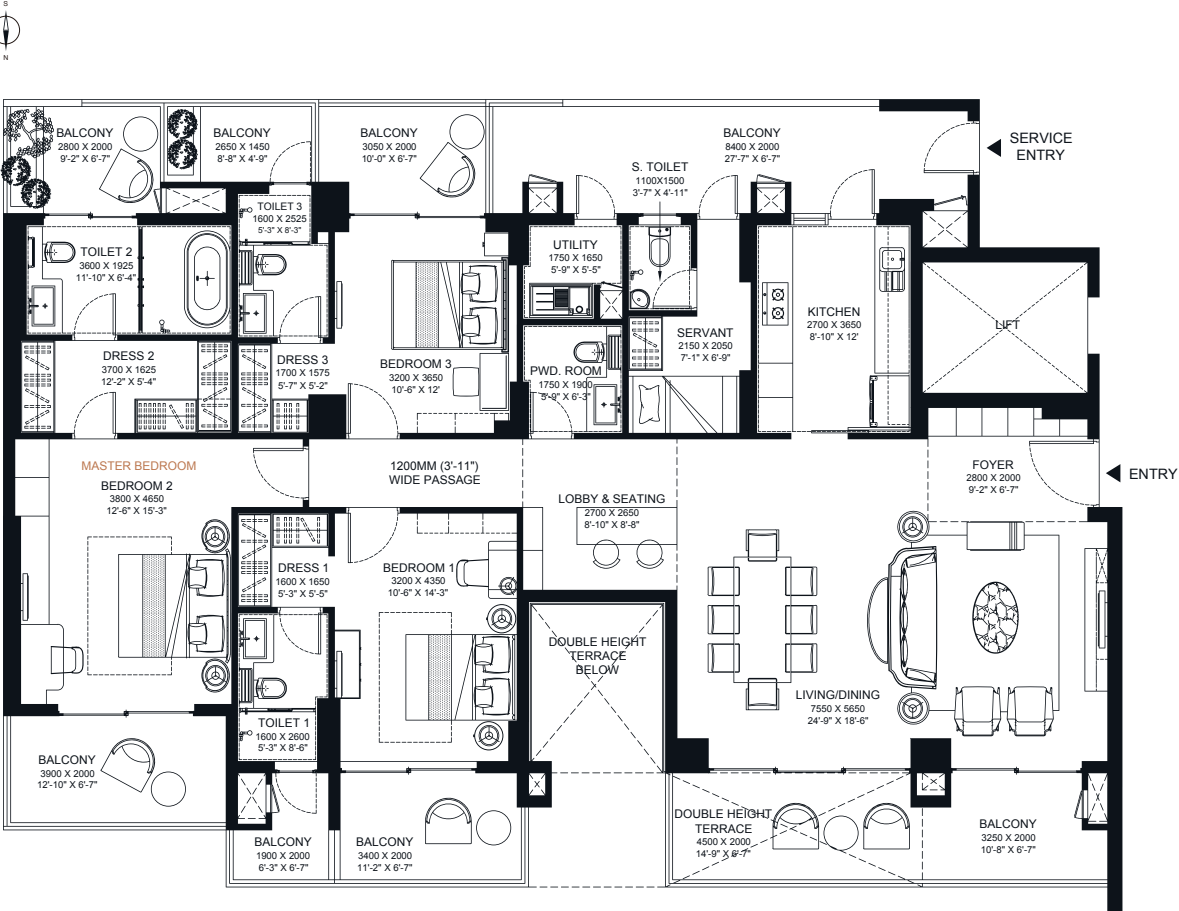
Two passenger elevators and one service elevator takes care of your privacy.

Dedicated Service Entry

To ensure safety and privacy of yours and your loved ones, a separate and limited access is provided for the service staff.

3 BHK TYPE A

Carpet Area: 151.94 sqm/ 1635.48 sqft
Balcony/ Terrace Area: 62.92 sqm/ 677.27 sqft
Super Area: 305.08 sqm/ 3283.93 sqft

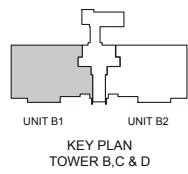
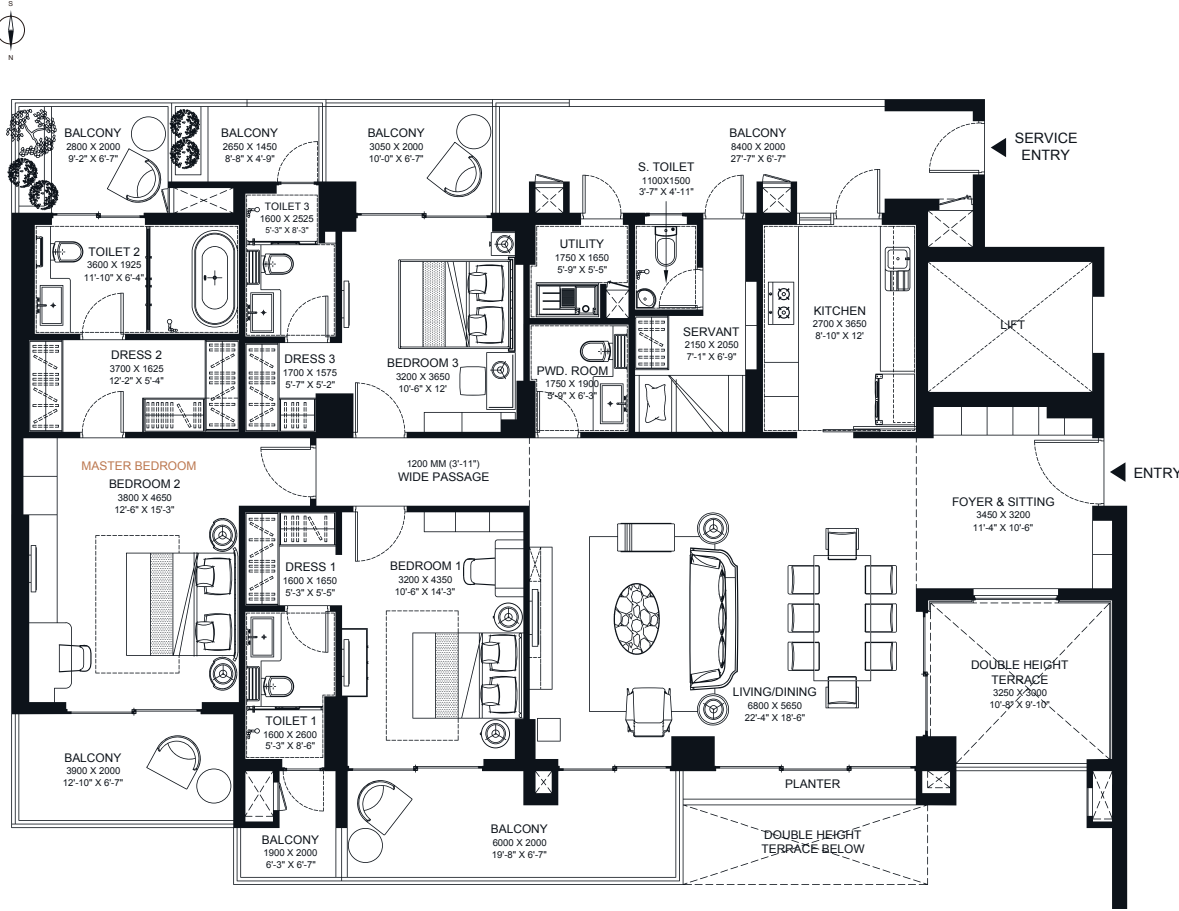


ADVANTAGES

- 1) Living & dining area as long as 7.55 meter
- 2) 9 sqm of double height terrace with living & dining area
- 3) Balconies/ terrace spread over 62.92 sqm area
- 4) Dedicated space of 7.16 sqm for Living & dining bar

3 BHK TYPE B

Carpet Area: 150.05 sqm/ 1615.14 sqft
Balcony/ Terrace Area: 62.61 sqm/ 673.93 sqft
Super Area: 302.40 sqm/ 3255.07 sqft

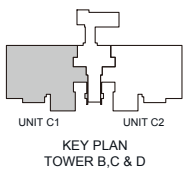
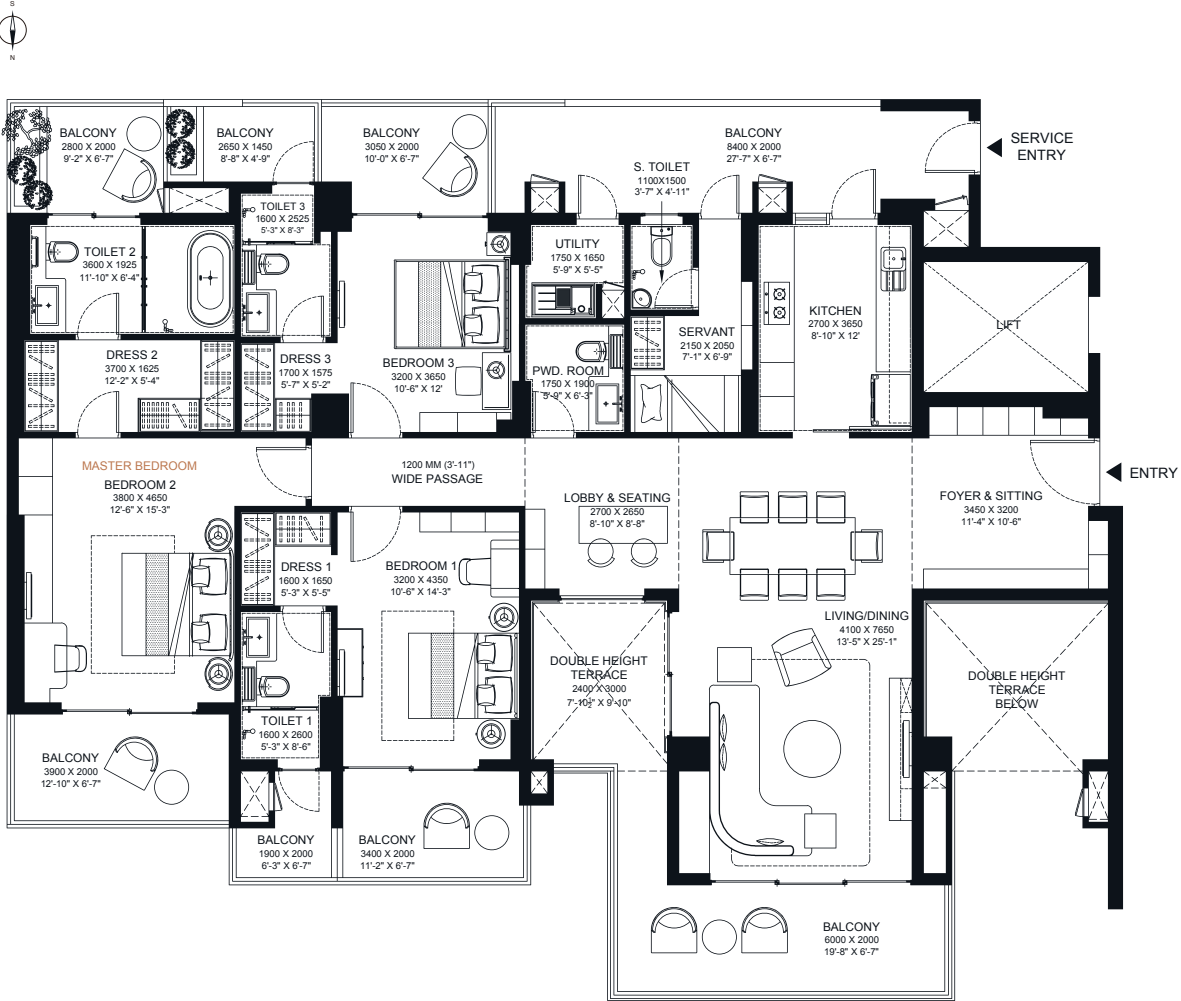


ADVANTAGES

- 1) A dedicated foyer of 11.04 sqm
- 2) Unlimited green views from 6.8-meter-wide Living & dining area
- 3) 9.36 sqm of double height terrace attached with Dining area
- 4) Enjoy large balconies/terraces spread over 62.61 sqm area

3 BHK TYPE C

Carpet Area: 149.96 sqm/ 1614.17 sqft
Balcony/ Terrace Area: 69.41 sqm/ 747.13 sqft
Super Area: 312.14 sqm/ 3359.90 sqft



ADVANTAGES

- 1) A dedicated foyer of 11.04 sqm
- 2) Enjoy expansive views from the wrap around balcony
- 3) Create your own vertical garden in 7.2 sqm of double height terrace
- 4) Enjoy large balconies/terraces spread over 69.41 sqm area

Slab Type Apartments

Only 2 apartments per floor with North & South oriented balconies, ensures ample sunlight and proper ventilation in all the corners of the house. This also provides enhanced privacy and exclusivity giving your house a new definition of luxury.

Beautiful Views

The living rooms are as wide as 8.9 meters with attached balconies to provide you the enhanced feeling of green views. The views can be enjoyed from all the corners of the house, including all your bedrooms, living/dining & kitchen.

Extravagant Balconies

Enjoy these spacious balconies with all bedrooms, kitchen and not to miss even with the master toilets. So plant your own kitchen garden or just sit and relax, just soak yourself in these green horizons anytime anywhere.

High Ceilings

The floor height at 3.6 meters enhances sense of spaciousness which allows adequate height for chandeliers and enjoy the grand experience.

Master Bedroom Dressing Area

8.4 sqm of classy his & her Master Closet area is lined with open shelving & display cabinets.

Private Elevators

Two passenger elevators and one service elevator takes care of your privacy.

Dedicated Service Entry

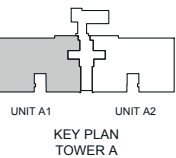
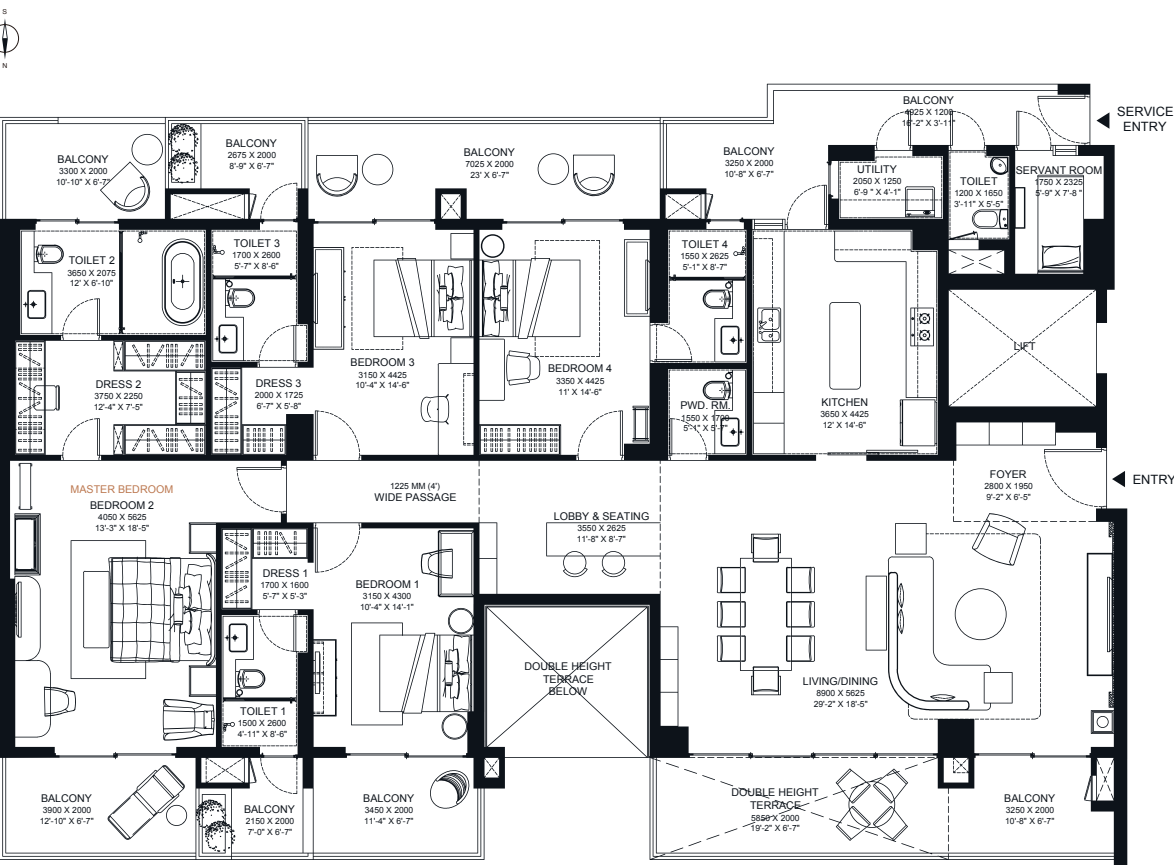
To ensure safety and privacy of yours and your loved ones, a separate and limited access is provided for the service staff.

4 BHK TYPE A

Carpet Area: 198.37 sqm/ 2135.25 sqft

Balcony/ Terrace Area: 72.77 sqm/ 783.30 sqft

Super Area: 362.97 sqm/ 3907.03 sqft



ADVANTAGES

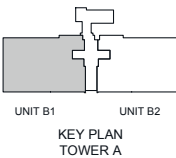
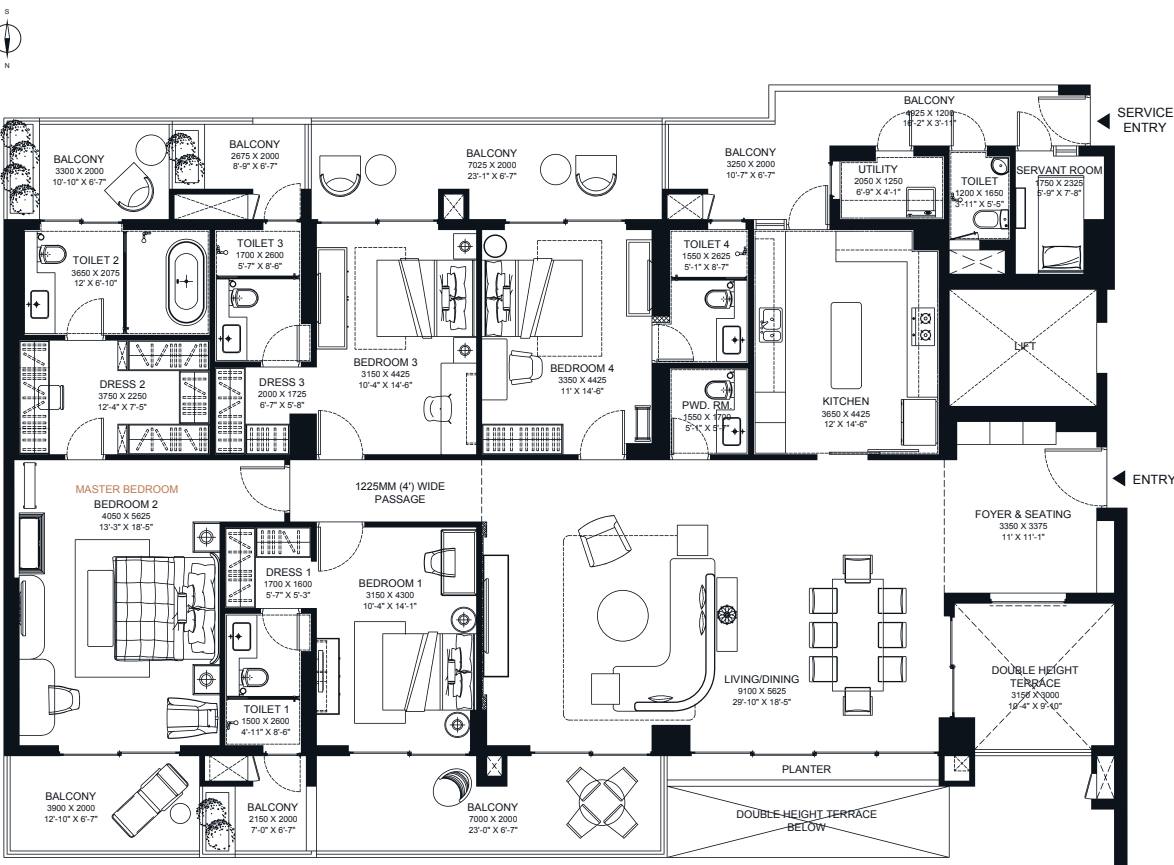
- 1) Living & Dining area as wide as 8.9 meter
- 2) 11.6 sqm of double height terrace attached with Living & Dining
- 3) Dedicated space of 9.32 sqm for Bar
- 4) Large balconies/ terrace areas catering to 72.77 sqm area

4 BHK TYPE B

Carpet Area: 199.38 sqm/ 2146.13 sqft

Balcony/ Terrace Area: 71.39 sqm/ 768.44 sqft

Super Area: 362.15 sqm/ 3898.20 sqft



ADVANTAGES

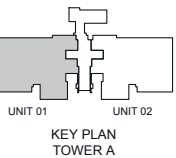
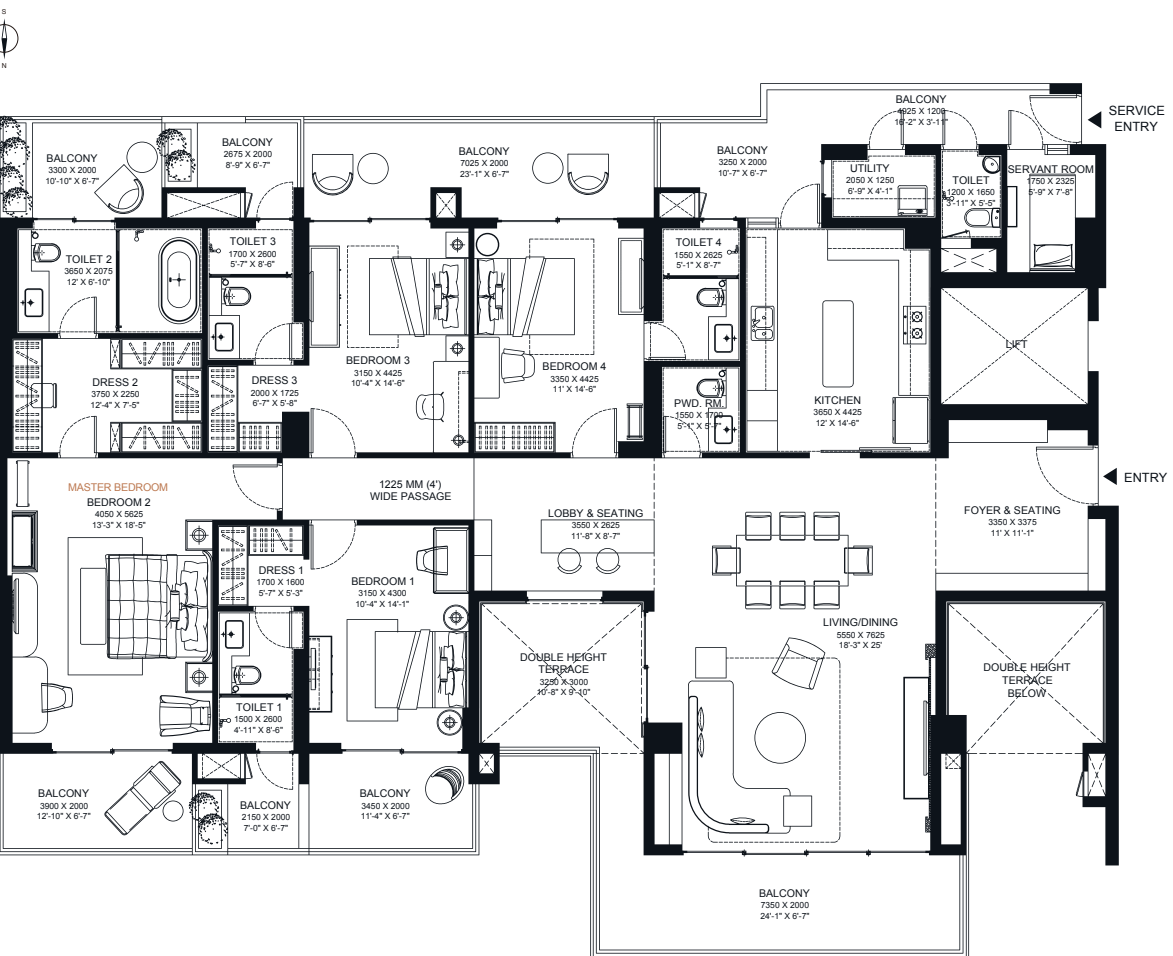
- 1) A dedicated foyer of 11.30 sqm
- 2) 9.45 sqm sqm of terrace attached with Dining area
- 3) Unlimited green views from the 9.1 meter-wide living & dining
- 4) Enjoy 71.39 sqm of of spacious balconies/ terrace spaces

4 BHK TYPE C

Carpet Area: 199.44 sqm/ 2146.77 sqft

Balcony/ Terrace Area: 81.84 sqm/ 880.93 sqft

Super Area: 375.89 sqm/ 4046.05 sqft



ADVANTAGES

- 1) A dedicated sitting area of 11.30 sqm
- 2) Enjoy expansive views from the wrap around balcony
- 3) Create your own vertical garden in the 9.75 sqm of terrace area
- 4) Enjoy 9.32 sqm of dedicated space for bar



Slab Type Floor Plans

Only 2 Penthouses per tower with north & south oriented balconies, ensures the grandness of space with ample sunlight and proper ventilation.



270 Degree Beautiful Views

Step out of your room, all you see is green! Enjoy the view of greens all around.



Large Spaces

The living & dining rooms are as wide as 12.45 meters, balconies are as long as 21.85 meters. Separate open and covered sitting areas to enjoy a cup of coffee or pursue passion of gardening.



A Pool, Gym and a beautiful Garden in the clouds
A private roof top pool, a terrace gym with beautiful landscape around, these are the exclusive features that defines life at the top, a pleasure to reside at Sky Mansion.

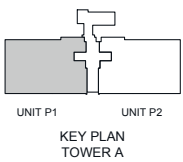
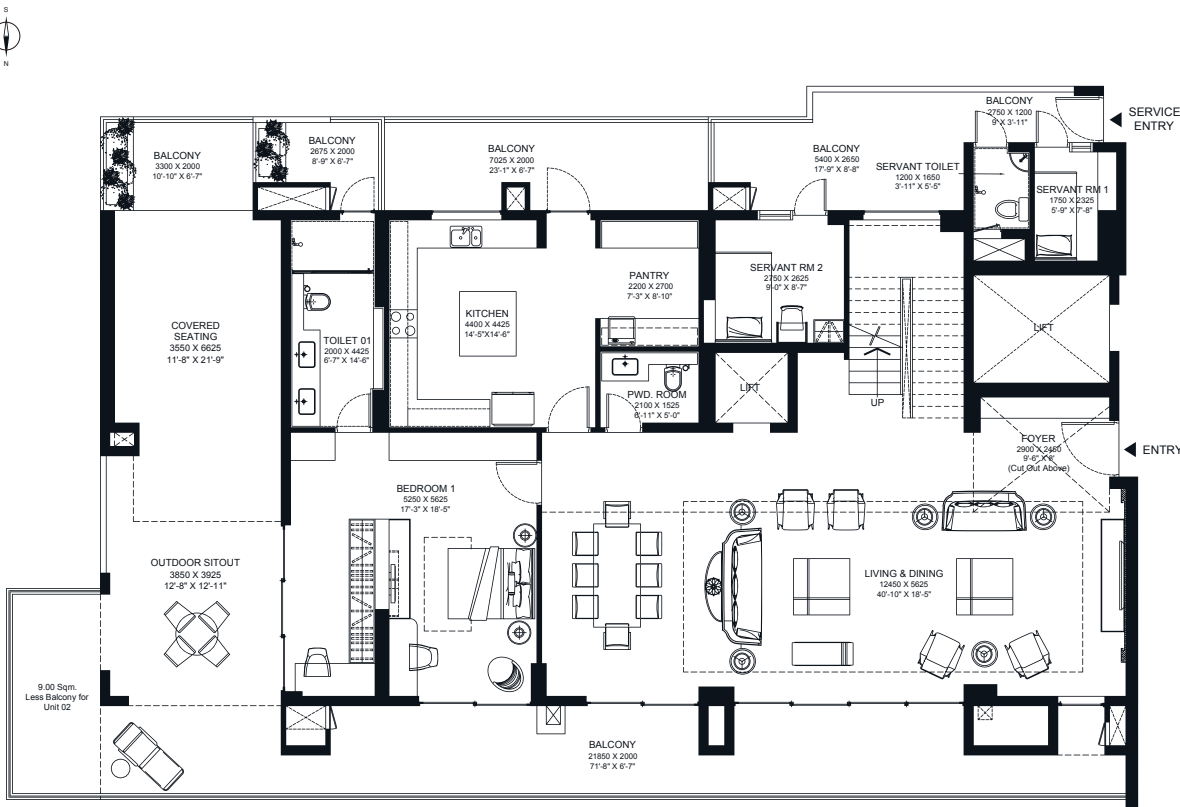


Exclusive elevator

A private elevator is designed to connect these three floors of luxury.

PENTHOUSE TYPE A LVL 1

Carpet Area: 400.01 sqm/ 4305.71 sqft
Balcony/ Terrace Area: 356.26 sqm/ 3834.78 sqft
Super Area: 1034.19 sqm/ 11132.02 sqft

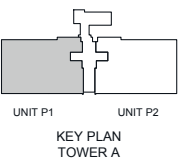
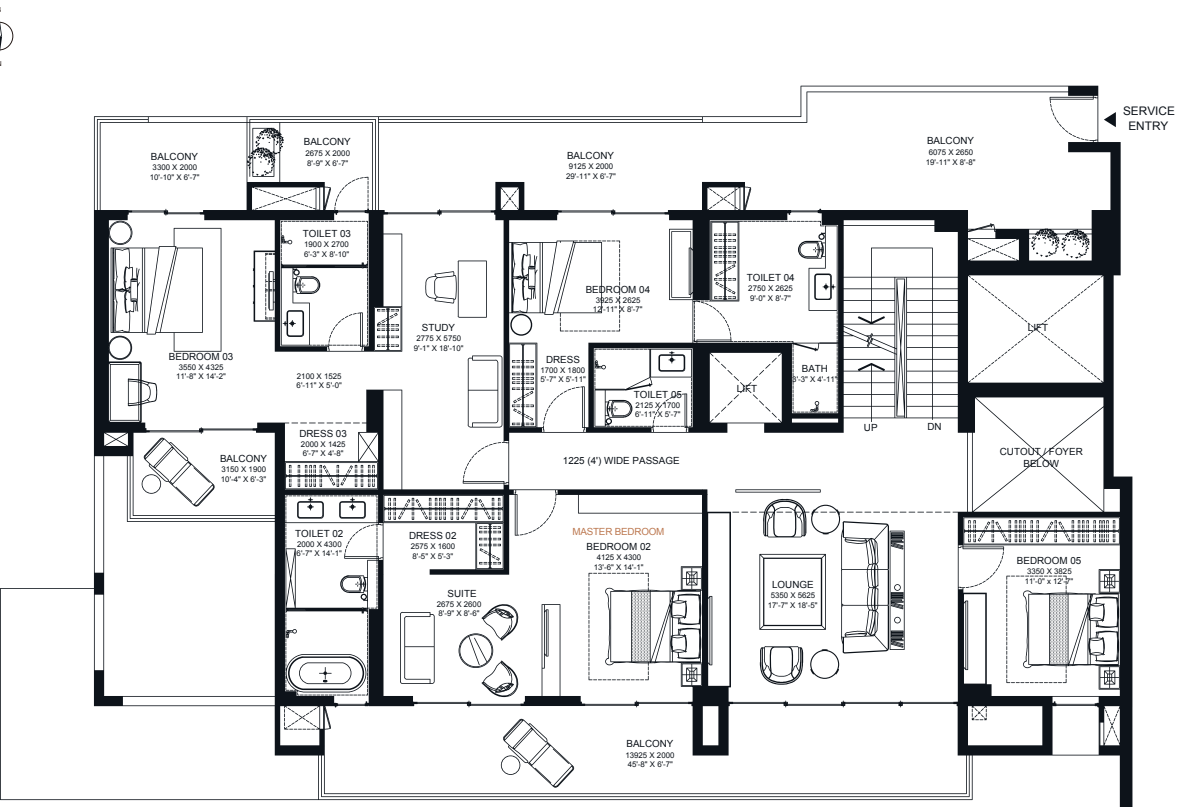


ADVANTAGES

This floor is designed with formal living & dining areas, one bedroom and servant rooms

- 1) A living room longer than 12 meters with attached dining space
- 2) This is large enough space to host a party for 50 people
- 3) An expansive kitchen of 19.47 sqm area, with pantry
- 4) Enjoy the balcony/terrace area spread over 126.61 sqm

PENTHOUSE TYPE A LVL 2

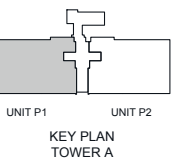
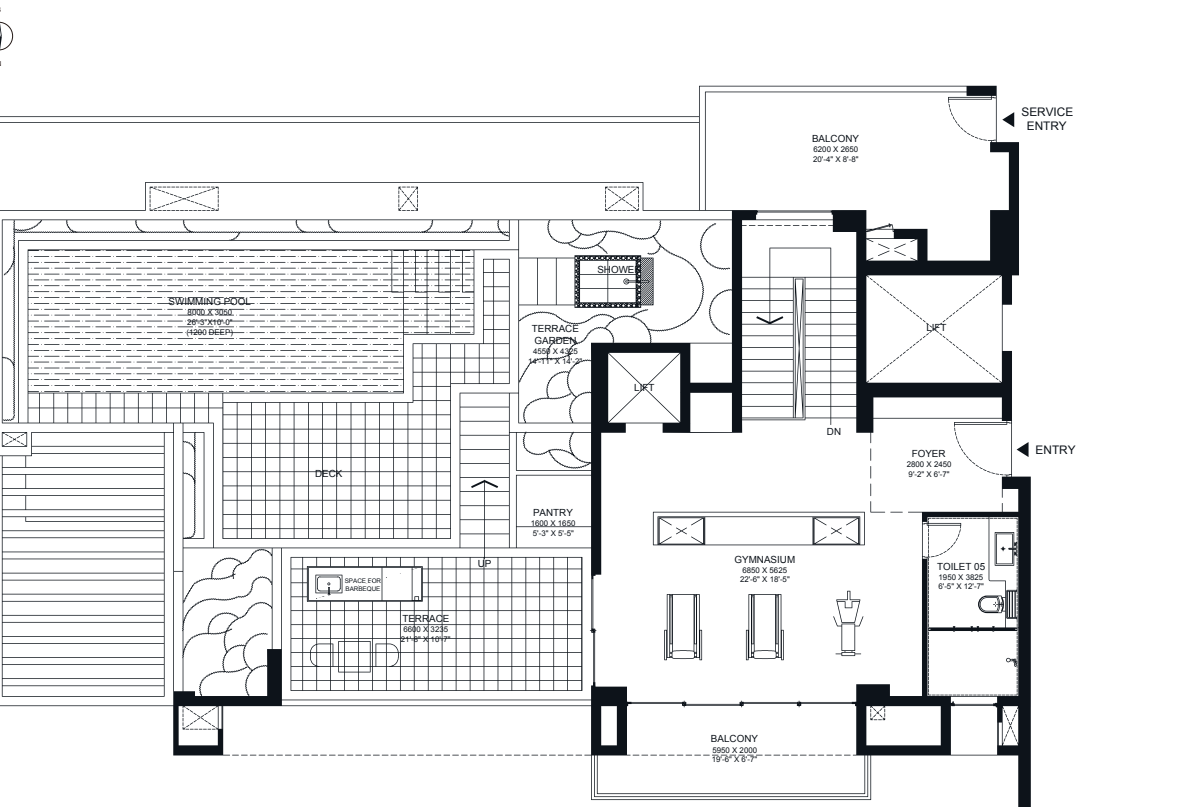


ADVANTAGES

This floor is designed for bedrooms, a family lounge connected with an elevator and grand staircase

- 1) A master suite with a large walking closet
- 2) The balconies spread over 79.52 sqm
- 3) Designated study space of 16 sqm
- 4) Dedicated lounge area of 30 sqm for family gathering

PENTHOUSE TYPE A LVL 3



ADVANTAGES

The Leisure Floor: An envious lifestyle

- 1) An exclusive gym of 38.53 sqm area on the terrace
- 2) A provision for you to barbeque with your locally produced herbs during the perfect winter afternoons
- 3) An exclusive swimming pool of 27.10 sqm on top of the roof
- 4) Tastefully designed pool deck areas surrounded by lush landscape and an outdoor shower for convenience



Slab Type Floor Plans

Only 2 Penthouses per tower with north & south oriented balconies, ensures the grandness of space with ample sunlight and proper ventilation.



180 Degree Beautiful Views

Enjoy unlimited greens from all the corners of the house, including all your bedrooms, living/dining and kitchen.



Large Spaces

The living rooms are wider than 10 meters, balconies are as long as 15.45 meters. Separate open and covered sitting areas to enjoy a cup of coffee or pursue passion of gardening.



A Pool, Gym and a beautiful Garden in the clouds

A private roof top pool, a terrace gym with beautiful landscape around, these are the exclusive features that defines life at the top, a pleasure to reside at Sky Mansion.



Exclusive elevator

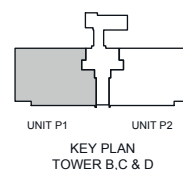
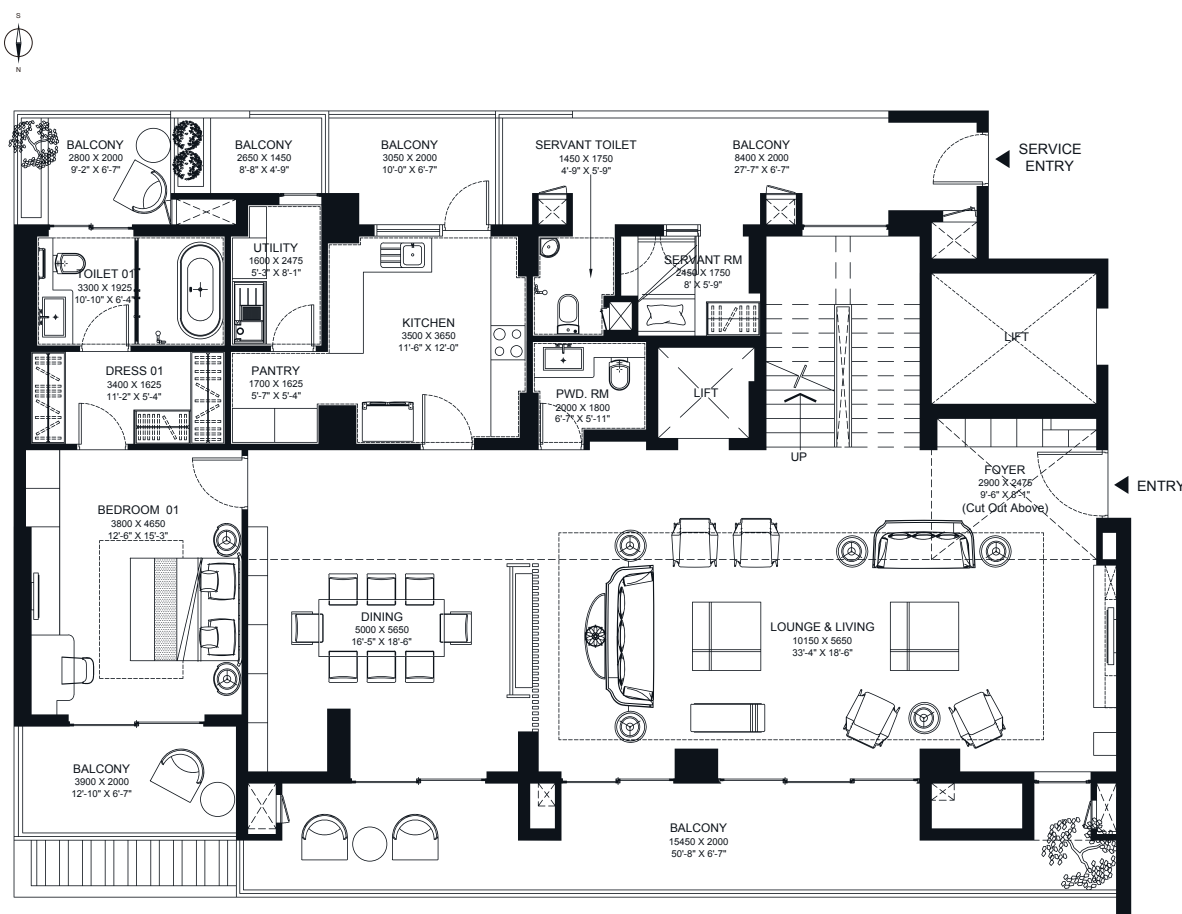
A private elevator is designed to connect these three floors of luxury.

PENTHOUSE TYPE B LVL 1

Carpet Area: 376.49 sqm/ 4052.54 sqft

Balcony/ Terrace Area: 248.45 sqm/ 2674.32 sqft

Super Area: 877.86 sqm/ 9449.29 sqft

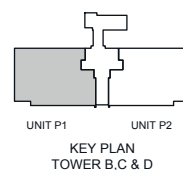
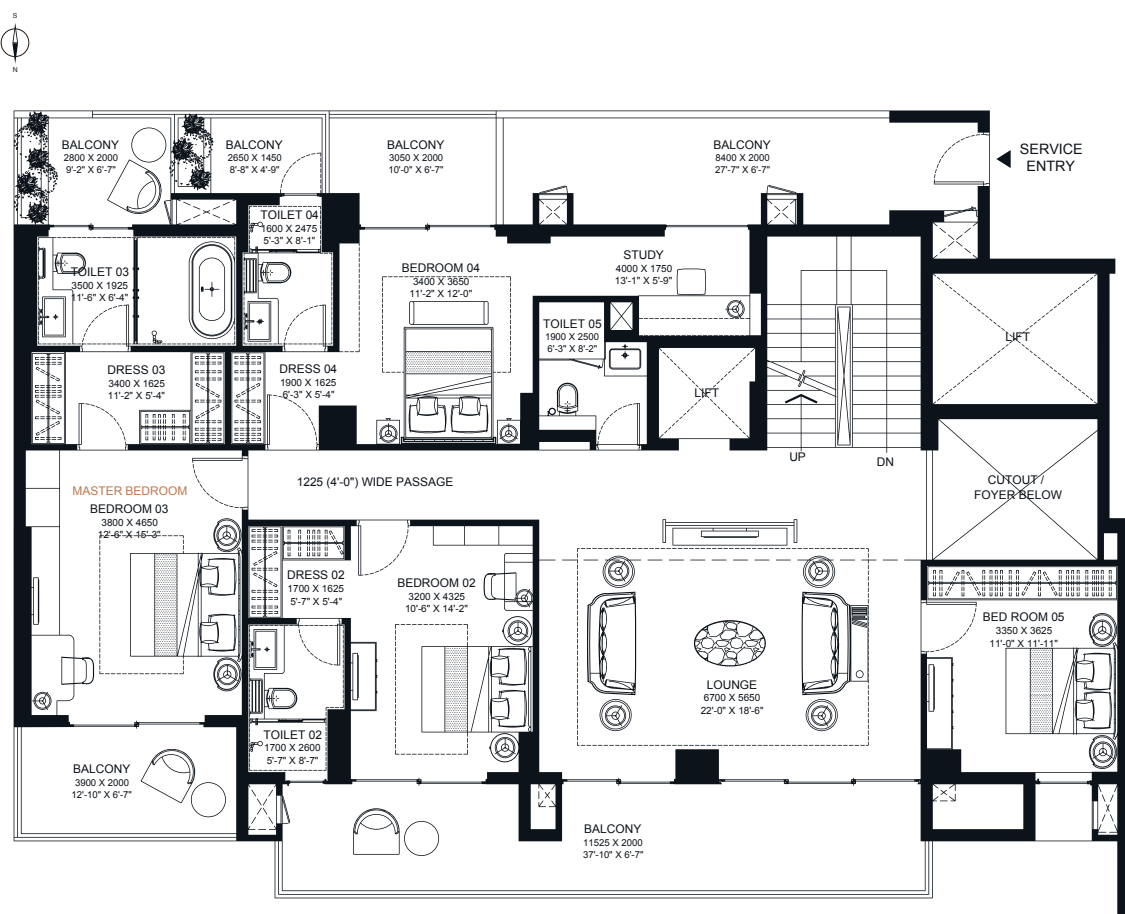


ADVANTAGES

This floor is designed with formal living & dining areas, one bedroom and servant room

- 1) The living room is spread over 57.35 sqm area with attached 28.25 sqm dining space
- 2) This is large enough space to host a party of 40 people
- 3) An expansive kitchen of 12.78 sqm area, with pantry
- 4) Balconies spread over 65.51 sqm

PENTHOUSE TYPE B LVL 2

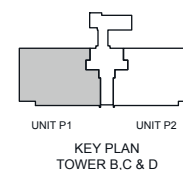
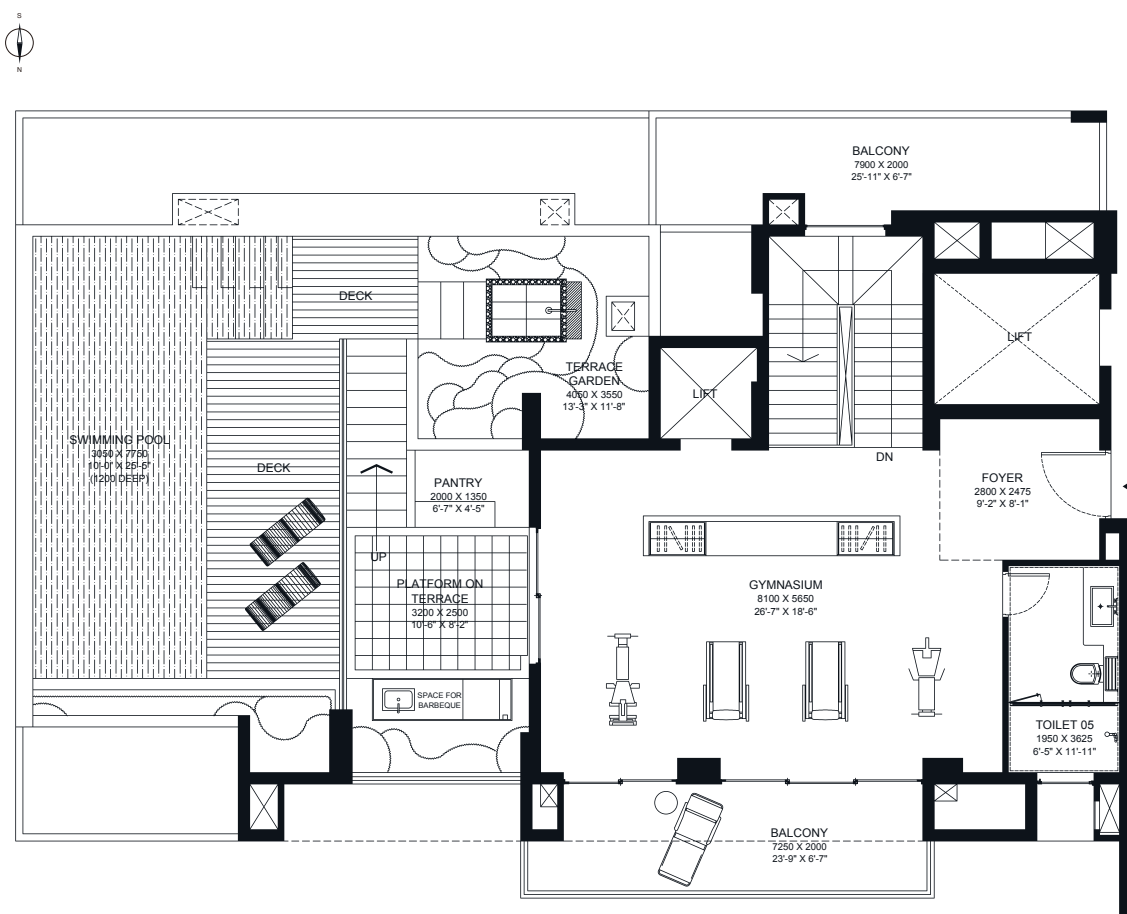


ADVANTAGES

This floor is designed for bedrooms, a family lounge connected with an elevator and grand staircase

- 1) A tastefully designed master bedroom, with balconies on both sides
- 2) 5.53 sqm of classy his & her master closet area is lined with open shelving & display cabinets.
- 3) Enjoy two balconies of 13.40 sqm, with master bedroom
- 4) The balconies spread over 60.59 sqm

PENTHOUSE TYPE B LVL 3



ADVANTAGES

The Leisure Floor: An envious lifestyle

- 1) An exclusive gym of 45.77 sqm area on the terrace
- 2) A provision for you to barbeque with your locally produced herbs during the perfect winter afternoons
- 3) A Private swimming pool of 26.33 sqm on top of the roof
- 4) Tastefully designed pool deck areas surrounded by lush landscape and an outdoor shower for convenience