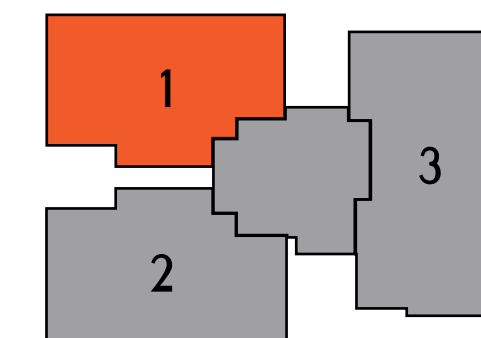


3BHK-TYPE A

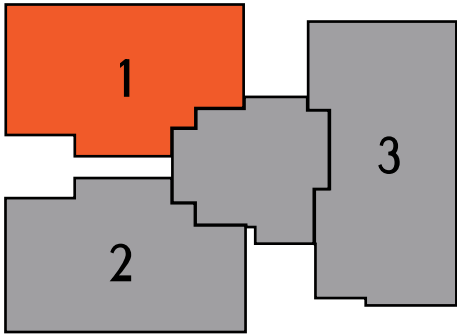
- Carpet Area = 1,195 sq.ft. / 111 sq.mtr.
- Exclusive Area = 1,701 sq.ft. / 158 sq.mtr.
- Super Area = 2,150 sq.ft (Approx) / 202 sq.mtr



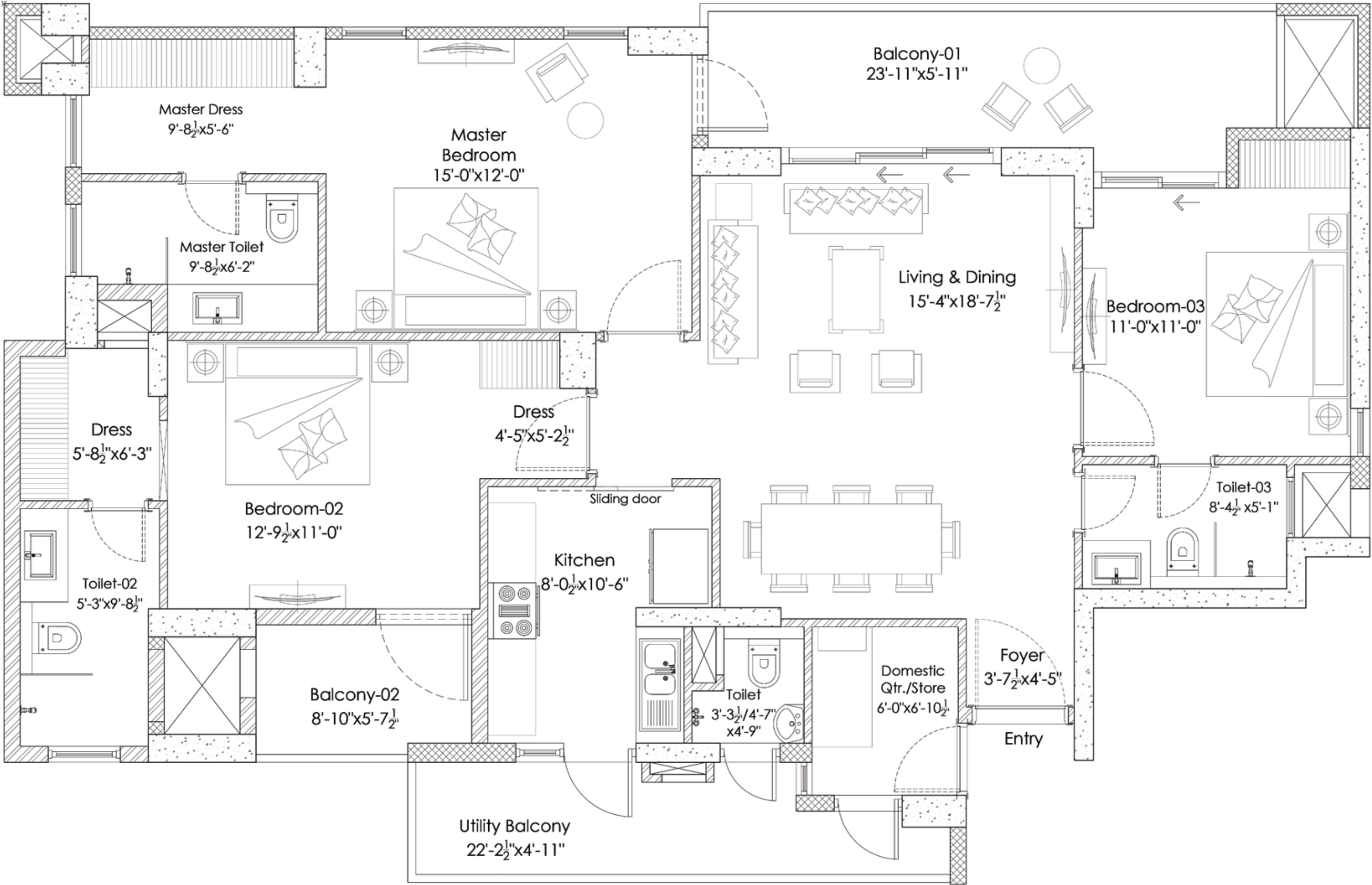
Layout shown is of Apartment 1, Apartment 2 will be a mirror image of the same

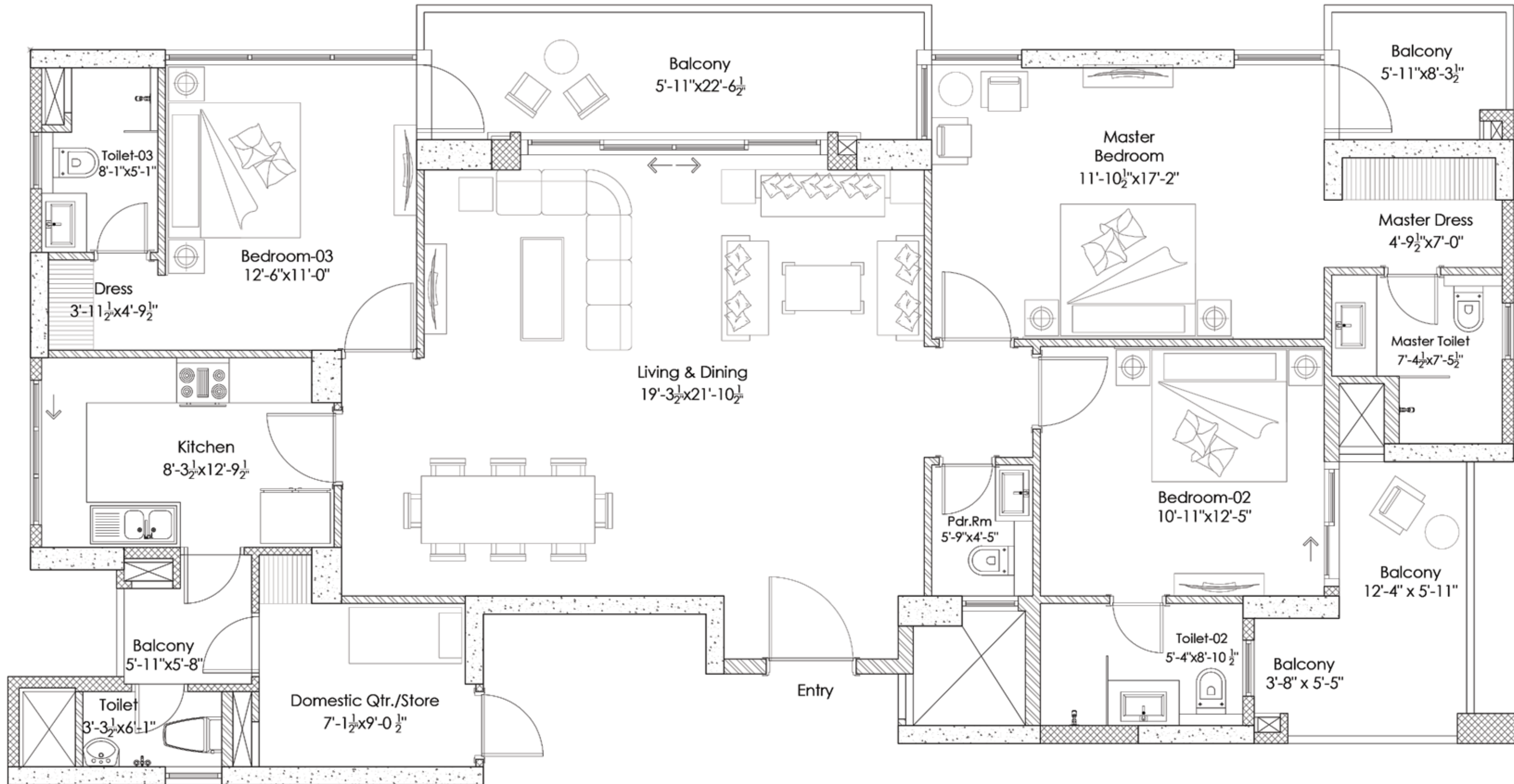
3BHK-TYPE B

- Carpet Area = 1,238 sq.ft. / 115 sq.mtr.
- Exclusive Area = 1,701 sq.ft. / 158 sq.mtr.
- Super Area = 2,150 sq.ft (Approx) / 202 sq.mtr



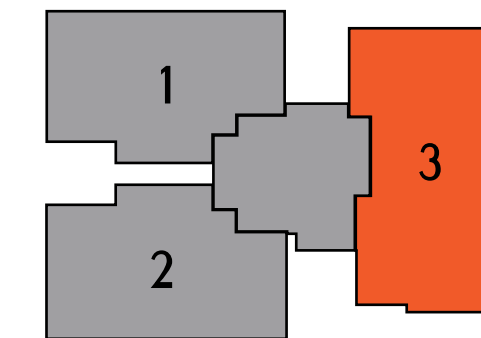
Layout shown is of Apartment 1, Apartment 2 will be a mirror image of the same





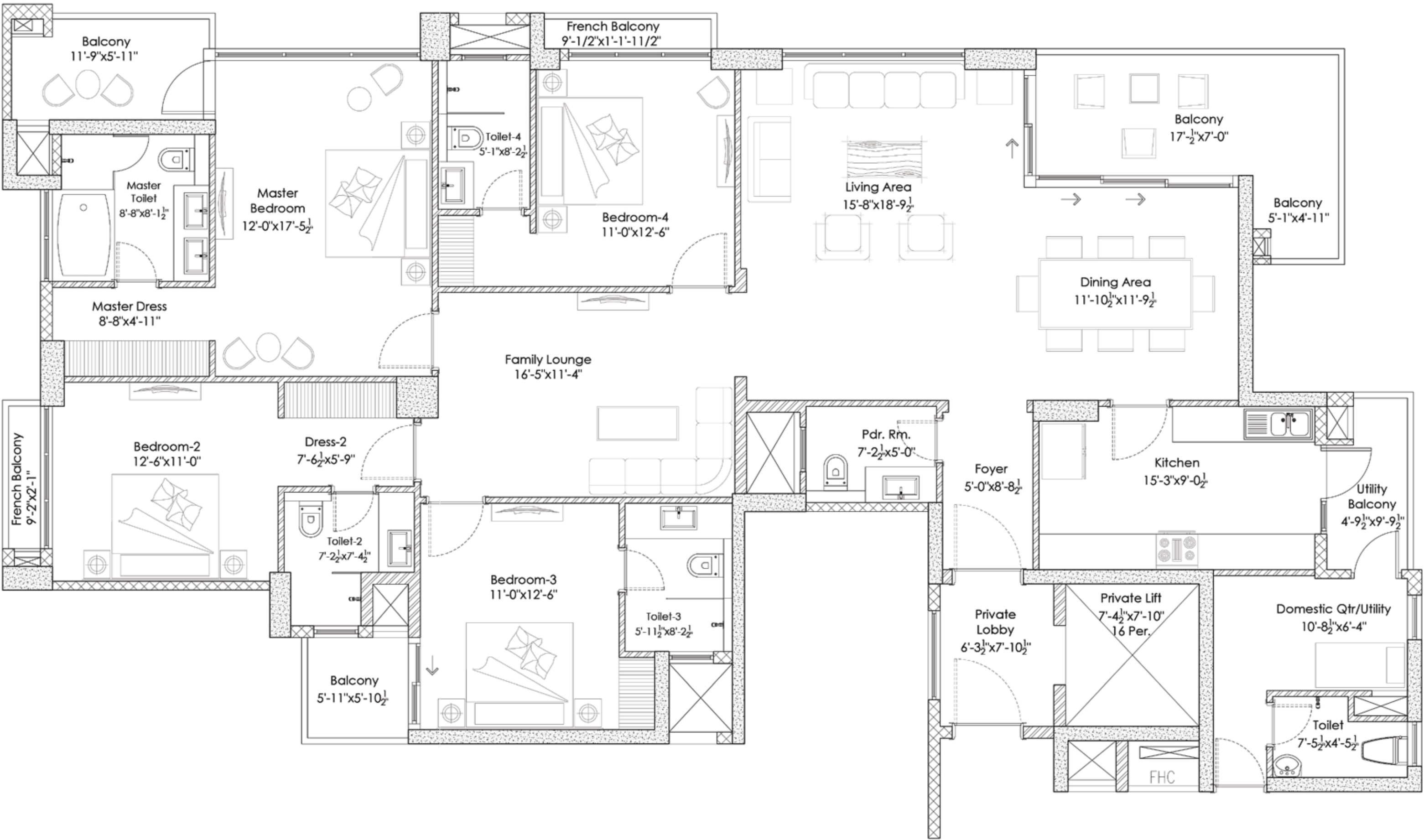
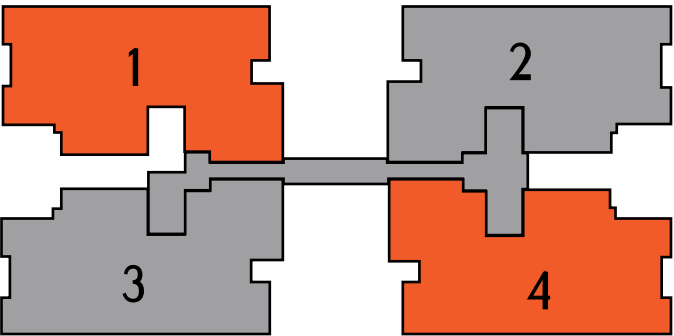
3BHK-TYPE C

- Carpet Area = 1,447 sq.ft. / 134 sq.mtr.
- Exclusive Area = 1,943 sq.ft. / 181 sq.mtr.
- Super Area = 2,500 sq.ft (Approx) / 231 sq.mtr



4BHK

- Carpet Area = 1,980 sq.ft. / 184 sq.mtr.
- Exclusive Area = 2,558 sq.ft. / 238 sq.mtr.
- Super Area = 3,300 sq.ft. (Approx) / 295 sq.mtr



Layout shown is of Apartment 1 & 4, Apartment 2 & 3 will be a mirror image of the same respectively